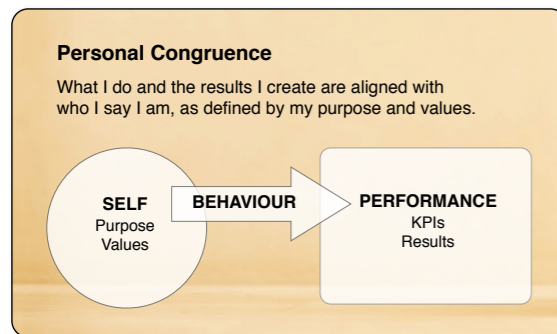


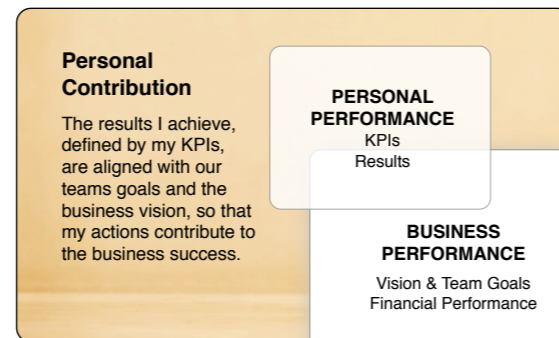
Personal congruence goal 1

Personal congruence goal 2



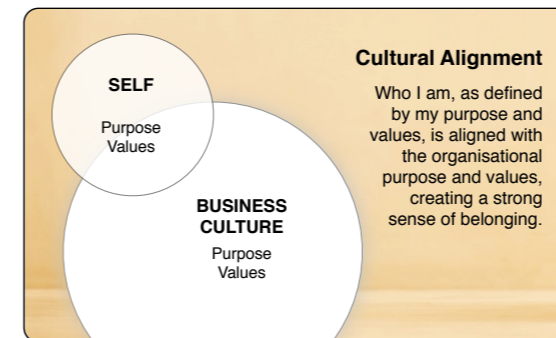
Personal contribution goal 1

Personal contribution goal 2



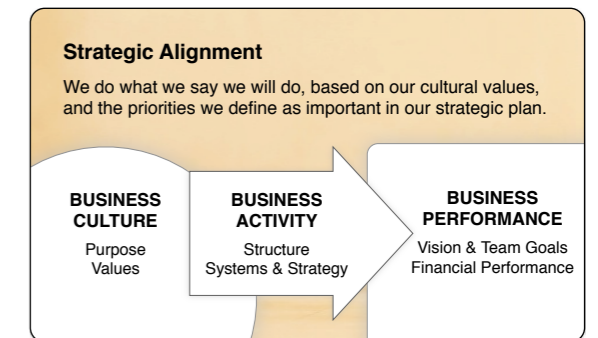
Cultural alignment goal 1

Cultural alignment goal 2



Strategic alignment goal 1

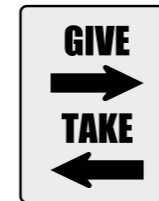
Strategic alignment goal 2



My purpose or mission



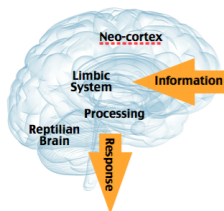
What I am employed to achieve this year



How I make a positive difference to our culture



Our business vision, team goals and strategic plan



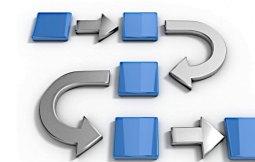
How I manage stress and build resilience



My technical skills and functional capabilities



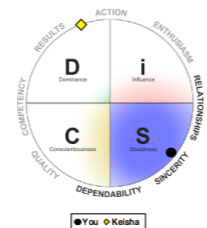
Our collective cultural values



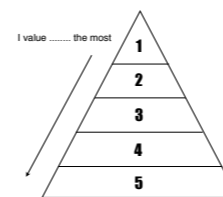
Our systems & processes which enable our strategy



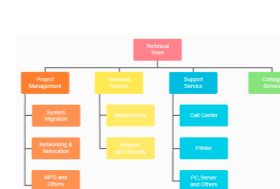
How I listen and receive information from others



My interpersonal skills and emotional intelligence



My personal values and role at work



Our team structure and collective skill sets

